

Raindrop Clarity: A Dual-Focused Dataset for Day and Night Raindrop Removal

Yeying Jin¹, Xin Li², Jiadong Wang¹, Yan Zhang¹, Malu Zhang³

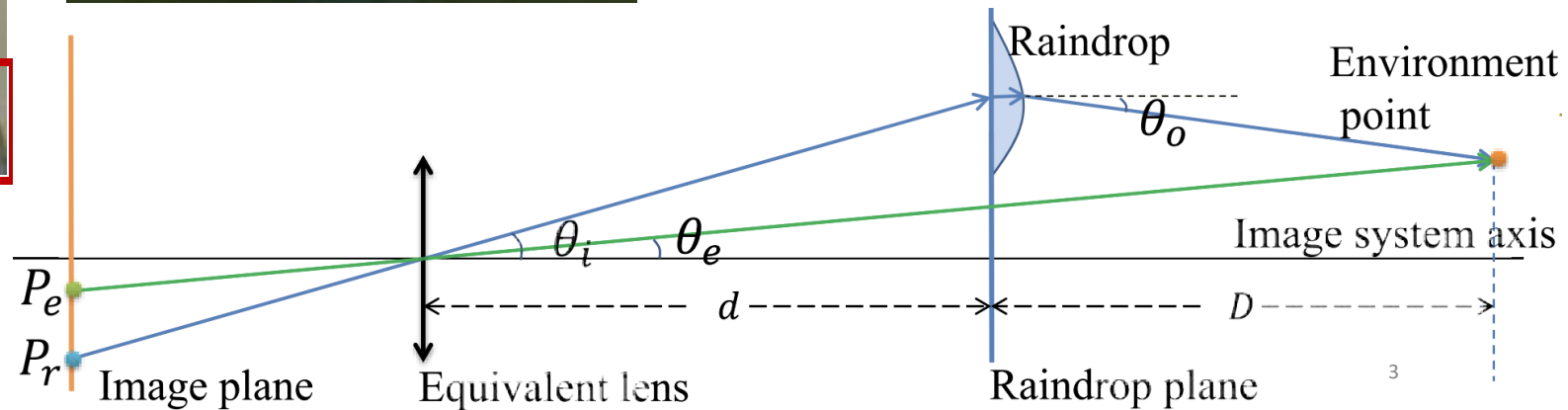
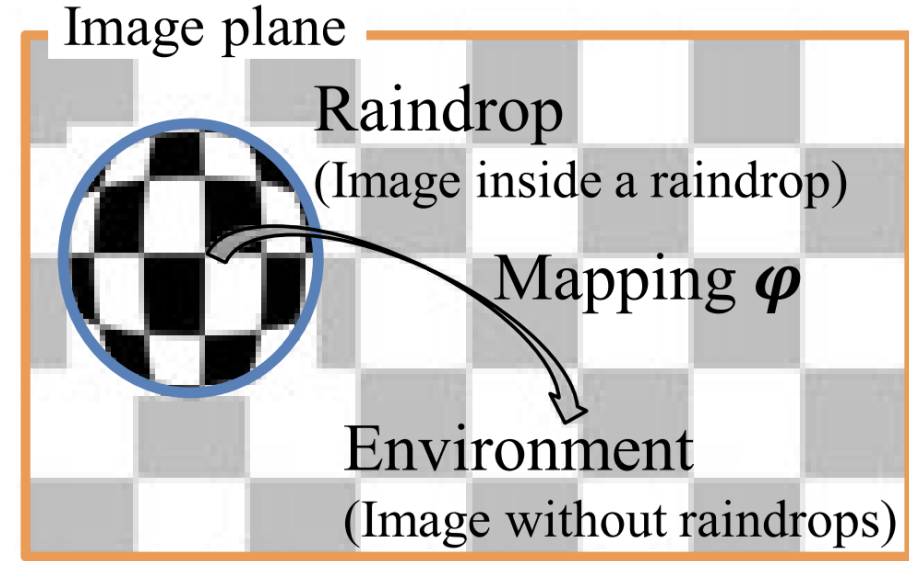
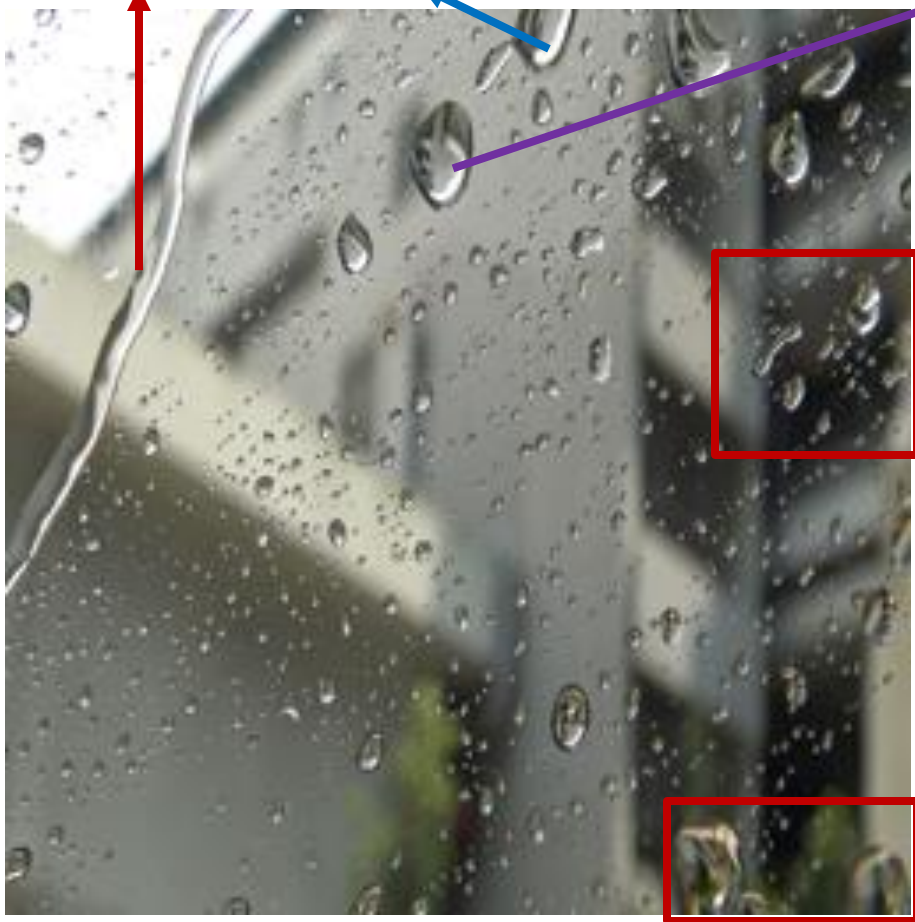
¹National University of Singapore; ²University of Science and Technology of China;

³University of Electronic Science and Technology of China

Motivation & Problem

Raindrop

Various Shapes, Glare, Transparency, Blur, Upside-down



Motivation

➤ Existing raindrop removal datasets:



(a) Qian

(b) RainDS Quan

(c) RobotCar Porav

(d) Windshield

Main limitations: 1. ❌ raindrop-focused, 2. ❌ night raindrops.

Published in ECCV'24

Raindrop Datasets Problems

- Raindrop-focused:

Bg-focused (Blurry rd)

Day

Existing raindrop datasets
mainly focus on
day background-focused

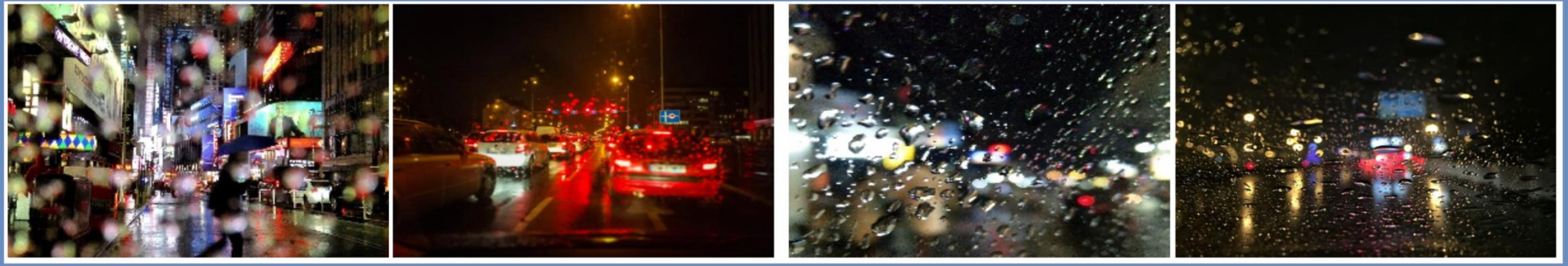
Rd = Raindrop, Bg = Background

Rd-focused (Blurry bg)



- Night raindrops:

Night



Main contributions: 1. ✓ raindrop-focused, 2. ✓ night raindrops.

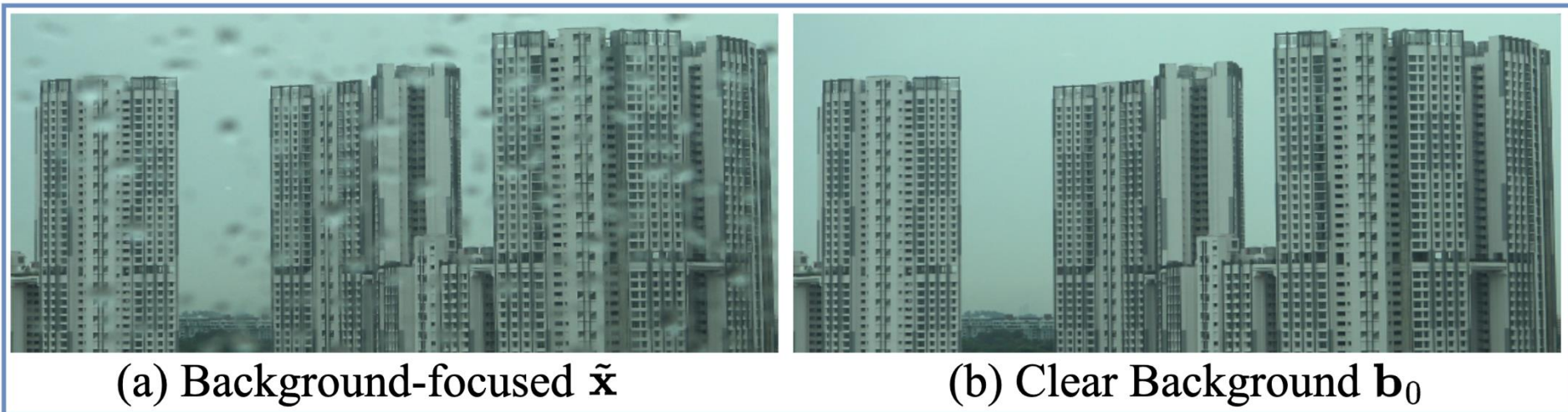
Published in ECCV'24

Key Contributions

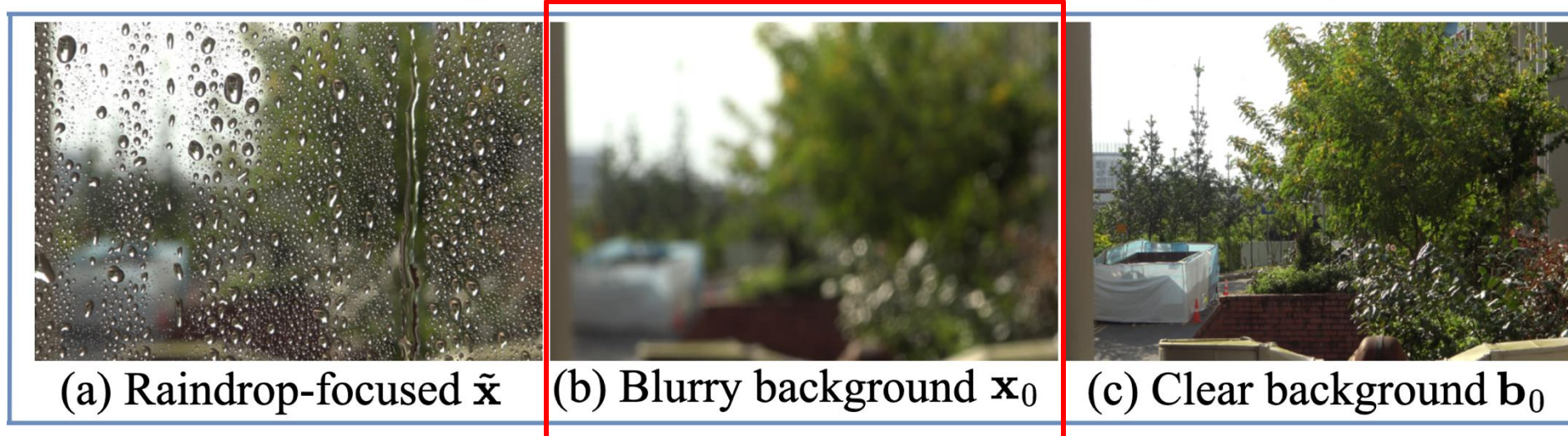
Contribution 1: Raindrop-focused

Background-focused (Blurry raindrop)

Day



Raindrop-focused (Blurry background)



Contribution 2: Night Raindrops

Background-focused (Blurry raindrop)

Night

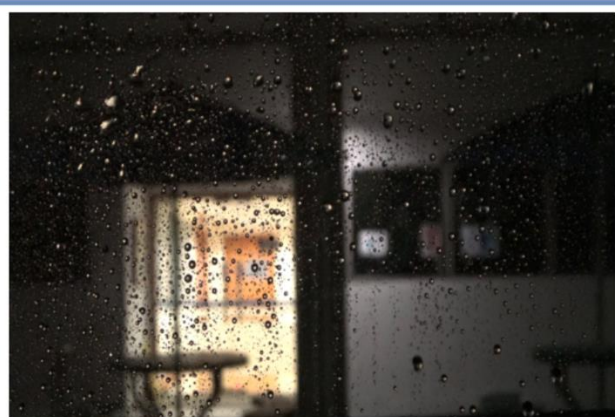


(a) Background-focused \tilde{x}

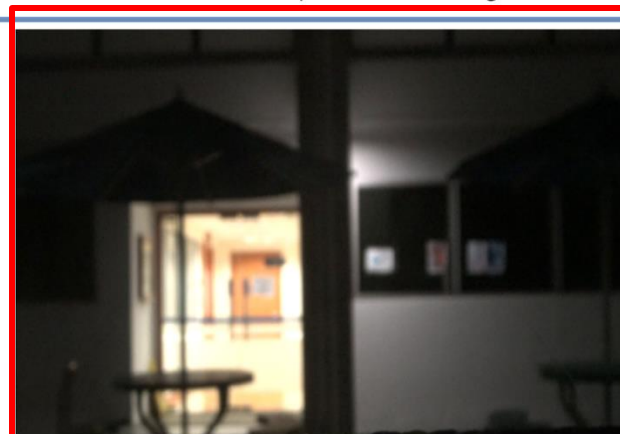


(b) Clear Background b_0

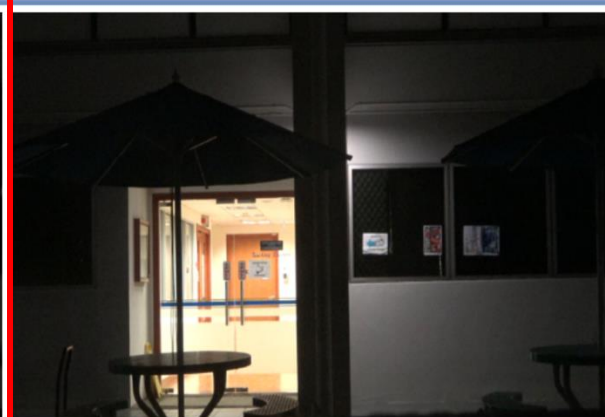
Raindrop-focused (Blurry background)



(a) Raindrop-focused \tilde{x}



(b) Blurry background x_0

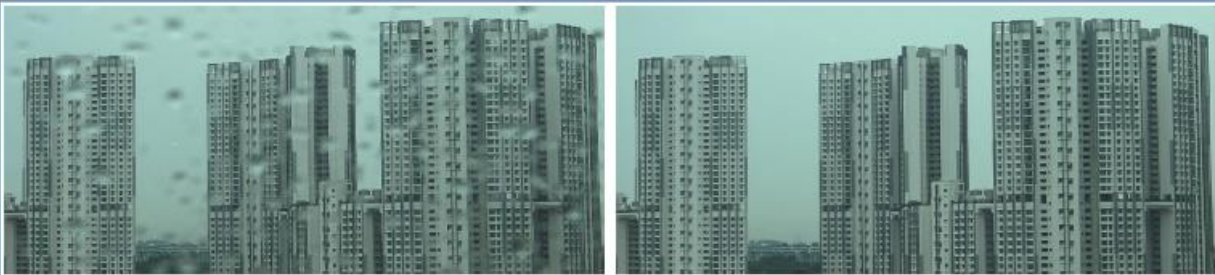


(c) Clear background b_0

Raindrop Clarity

Day

Background-focused (Blurry raindrop)



(a) Background-focused \tilde{x}

(b) Clear Background b_0

Raindrop-focused (Blurry background)



(a) Raindrop-focused \tilde{x}

(b) Blurry background x_0

(c) Clear background b_0

Night



(a) Background-focused \tilde{x}

(b) Clear Background b_0



(a) Raindrop-focused \tilde{x}

(b) Blurry background x_0

(c) Clear background b_0

Raindrop Clarity

Table 1. Summary of comparisons between our Raindrop Clarity and existing datasets. Bg-focus = Background-focused, Rd-focus = Raindrop-focused, RD = Raindrop. Raindrop Clarity uniquely features raindrop-focused triplets and the nighttime raindrops.

Datasets	Components	N. Images	Syn/ Real	Bg-focus		Rd-focus	
				Day	Night	Day	Night
Our RD Clarity (Day)	3,606 Triplets+1,836 Pairs	14,490	Real	✓	×	✓	×
Our RD Clarity (Night)	4,838 Triplets+4,906 Pairs	24,326	Real	×	✓	×	✓
Raindrop Qian [25]	919 Pairs	1,838	Real	✓	×	×	×
RainDS-Real [26]	248 Quadruplets	992	Real	✓	×	×	×
RainDS-Syn [26]	1,200 Quadruplets	4,800	Syn	✓	×	×	×
RobotCar Porav [24]	4,818 Pairs	9,636	Real	✓	×	×	×
Windshield [30]	3,390	3,390	Real	✓	×	×	×

Characteristics

Background-focused (Blurry raindrop)

(a) Background-focused \tilde{x}



(b) Clear background b_0



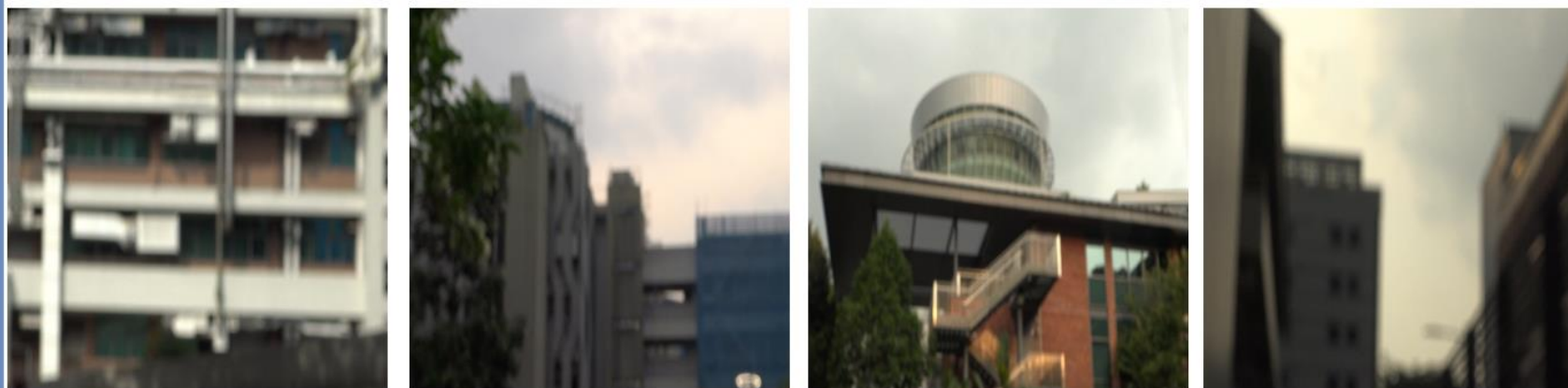
various sizes, shapes, and densities

Raindrop-focused (Blurry background)

(a) Raindrop-focused \bar{x}



(b) Blurry background x_0



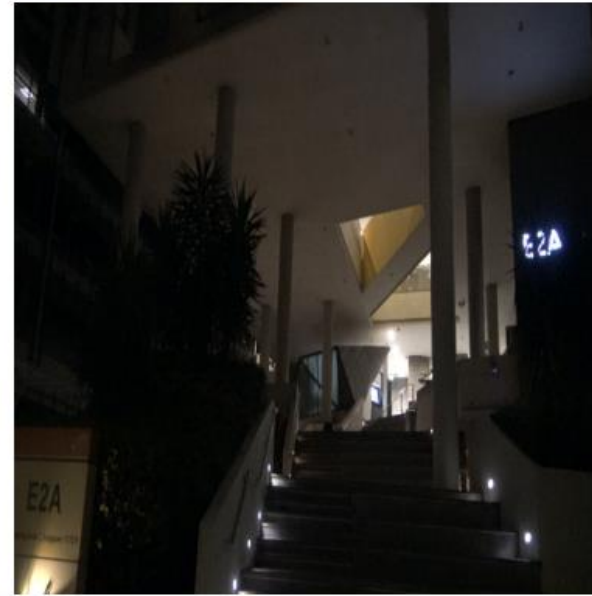
(c) Clear background b_0



diverse scenes and shapes

Background-focused (Blurry raindrop)

(a) Background-focused \tilde{x}



different lighting conditions

Raindrop-focused (Blurry background)

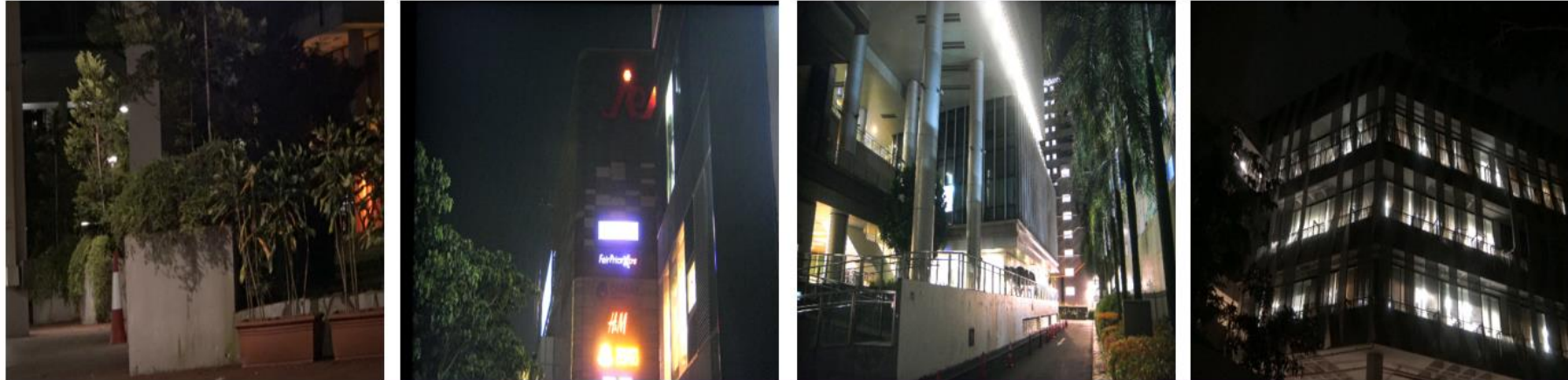
(a) Raindrop-focused \tilde{x}



(b) Blurry background x_0



(c) Clear background b_0

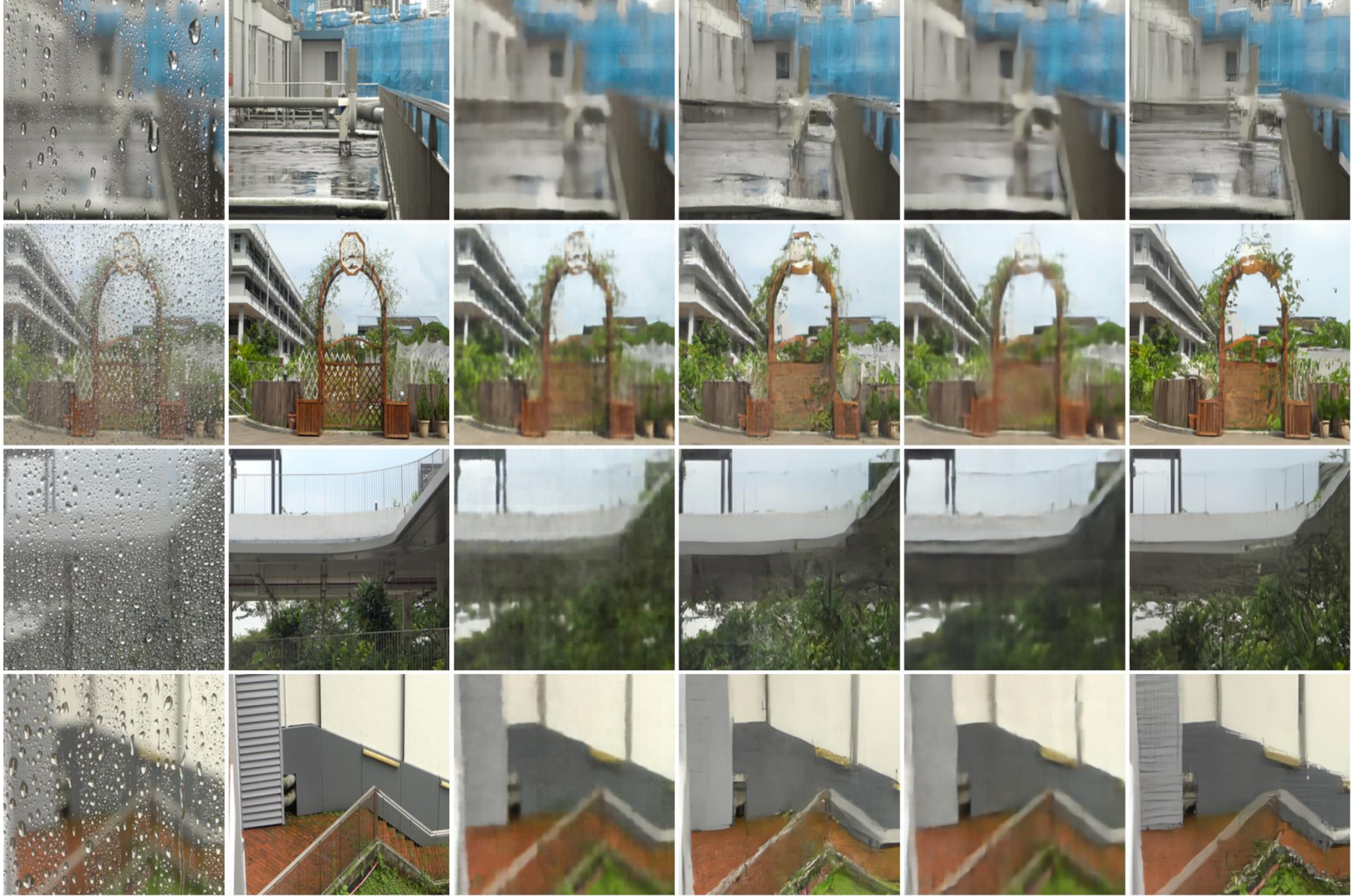


Raindrop Clarity -- Difference Map



Benchmark Results & Conclusions

Daytime Raindrop-focused



Input

Ground Truth

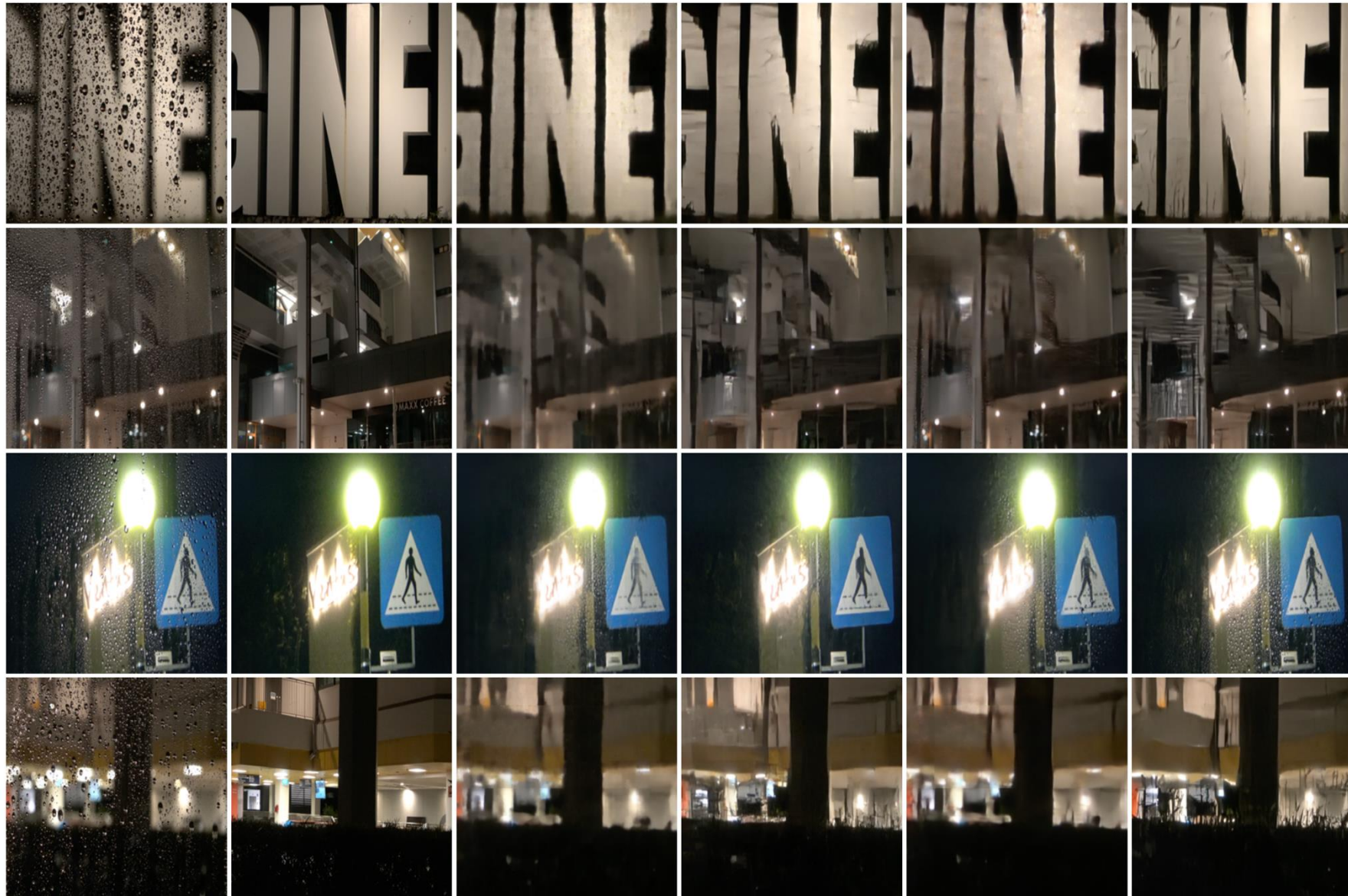
IDT [40]

RDiffusion [21]

Restormer [46]

DiT [22]

Nighttime Raindrop-focused



Input

Ground Truth

IDT [40]

RDiffusion [21]

Restormer [46]

DiT [22]

Daytime Background-focused



Input

Ground Truth

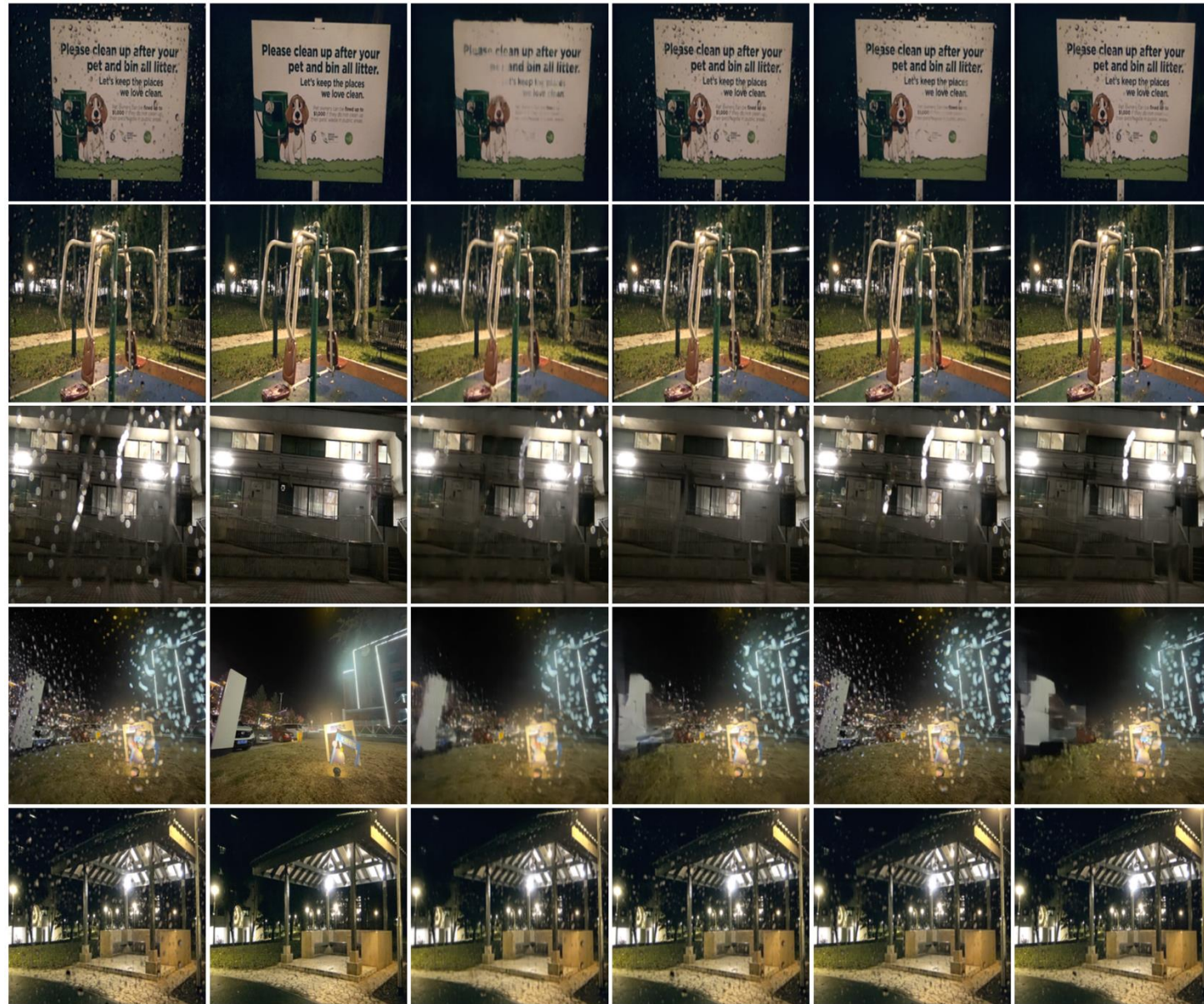
IDT [40]

RDiffusion [21]

Restormer [46]

DiT [22]

Nighttime Background-focused



Input

Ground Truth

IDT [40]

RDiffusion [21]

Restormer [46]

DiT [22]

Quantitative Results

Table 2. Quantitative evaluation of daytime and nighttime raindrop data with a benchmark for raindrop algorithms and restoration backbones.

Data\Method Input		Raindrop Algorithms					Restoration Backbones			
		AtGAN [25]	Robot [24]	RainDS [26]	IDT [40]	RDdiff [21]	Restor. [46]	Uform. [36]	DiT [22]	
Day	PSNR \uparrow	21.92	23.62	23.82	25.39	26.05	25.52	26.08	25.78	26.03
	SSIM \uparrow	0.560	0.658	0.670	0.717	0.736	0.734	0.748	0.727	0.752
	LPIPS \downarrow	0.247	0.200	0.191	0.147	0.141	0.111	0.131	0.148	0.106
Night	PSNR \uparrow	24.78	24.38	24.57	25.39	26.81	26.48	26.87	25.26	26.23
	SSIM \uparrow	0.726	0.773	0.787	0.820	0.851	0.831	0.848	0.816	0.826
	LPIPS \downarrow	0.209	0.185	0.182	0.139	0.125	0.112	0.123	0.142	0.111

Conclusion

- We introduce the Raindrop Clarity dataset, a large real-world dataset that includes both **raindrop-focused triplets** and background-focused pairs.
- Raindrop Clarity includes images collected during both day and **night**.
- Our benchmark results indicate that state-of-the-art methods struggle to perform effectively in **raindrop-focused** or **night** scenarios.



Thank you!

JINYEYING@U.NUS.EDU

CODES AND MODEL:

[HTTPS://GITHUB.COM/JINYEYING/RAINDROPCLARITY](https://github.com/jinyeying/raindropclarity)

